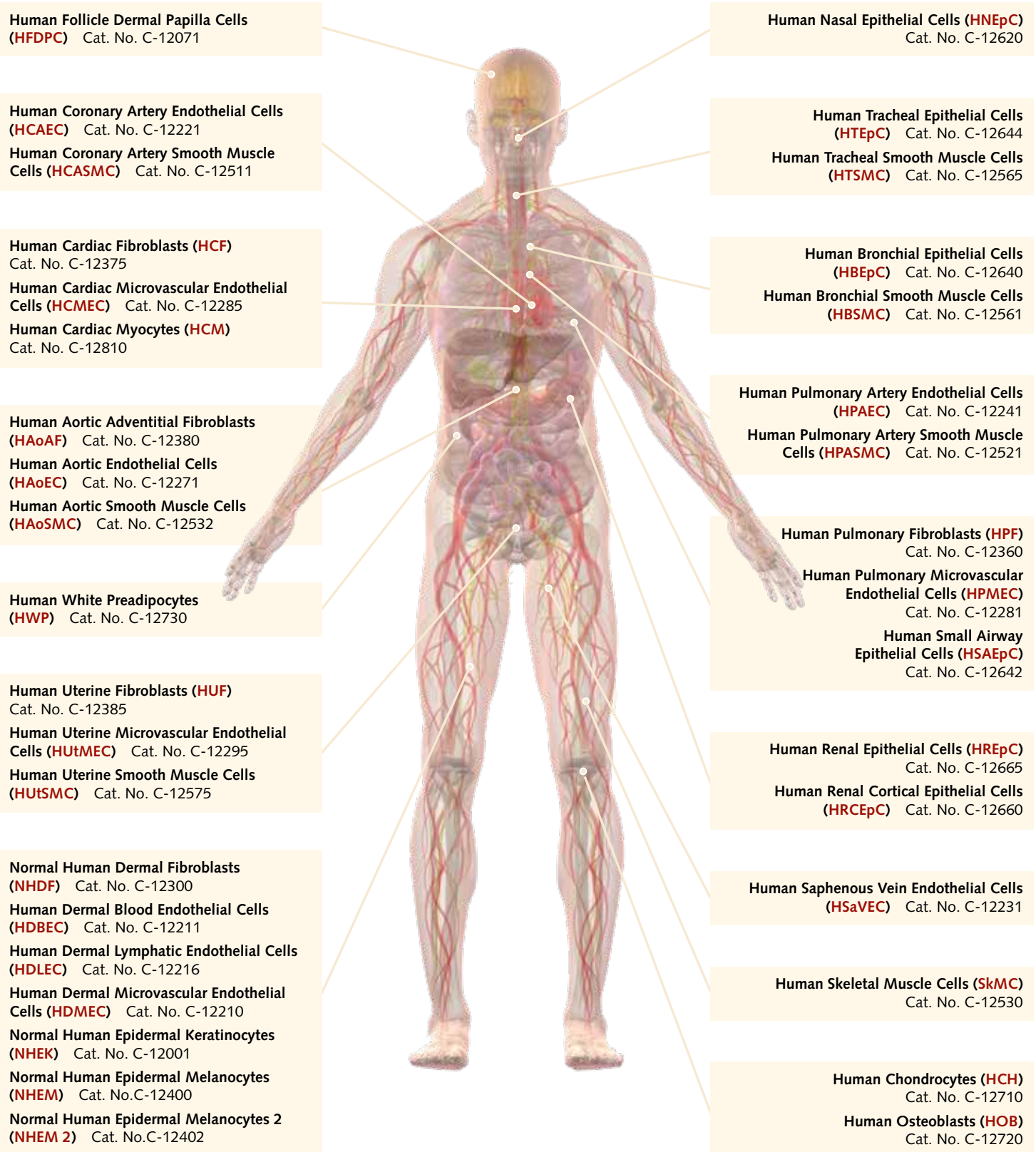


# HUMAN CELL TYPES

## HUMAN PRIMARY CELLS



# HUMAN CELL TYPES

## HUMAN STEM AND BLOOD CELLS

Human Mononuclear Cells from peripheral blood (**hMNC-PB**) Cat. No. C-12907

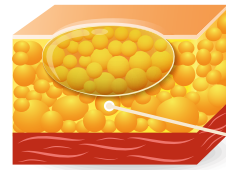
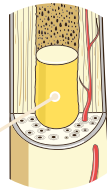
Human CD14<sup>+</sup> Monocytes (**hMoCD14<sup>+</sup>-PB**) Cat. No. C-12909

Human M1 Macrophages (**GM-CSF**) monocyte-derived Cat. No. C-12914

Human M2 Macrophages (**M-CSF**) monocyte-derived Cat. No. C-12915



Human Mesenchymal Stem Cells from bone marrow (**hMSC-BM**) Cat. No. C-12974



Human Mesenchymal Stem Cells from adipose tissue (**hMSC-AT**) Cat. No. C-12977

## CELLS FROM HUMAN PLACENTA AND UMBILICAL CORD

Human Pericytes from Placenta (**hPC-PL**) Cat. No. C-12980

Human Mesenchymal Stem Cells from umbilical cord matrix (**hMSC-UC**) Cat. No. C-12971

Human Mononuclear Cells from umbilical cord blood (**hMNC-CB**) Cat. No. C-12901

Human Umbilical Vein Endothelial Cells (**HUVEC**) Cat. No. C-12200

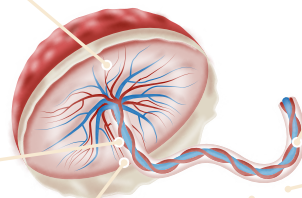
Human Umbilical Vein Endothelial Cells 2 (**HUVEC 2**) Cat. No. C-12206

Human CD34<sup>+</sup> Progenitor Cells (**hCD34<sup>+</sup>-CB**) Cat. No. C-12921

Human Umbilical Artery Endothelial Cells (**HUAEC**) Cat. No. C-12202

Human Umbilical Artery Smooth Muscle Cells (**HUASMC**) Cat. No. C-12500

Human placenta and umbilical cord



## PromoCell - The Cell Culture Experts



Go to [vwr.com](http://vwr.com) for the latest news, special offers and details from your local VWR support team

ZRPOVWRI18969-EN

# PromoCell